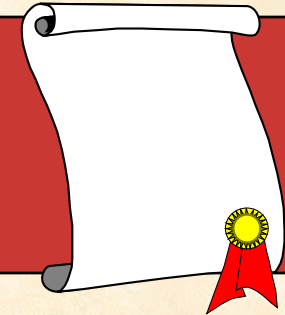


Transportation Planning for Topsail Island



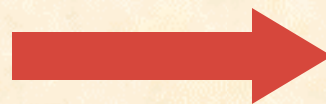
NCDOT - Transportation Planning Branch
March 2008

Topsail Island Area Transportation Plans



- **Area Thoroughfare plans:**
 - Pender County (1997)
- **Areas without Thoroughfare plans:**
 - Holly Ridge
 - North Topsail Beach
 - Topsail Beach
 - Surf City
 - Onslow County

**Thoroughfare
Plan**



**Comprehensive
Transportation
Plan**



What is Long Range Transportation Planning?

- ***Purpose:***
 - To generate information decision-makers can use to guide future transportation decisions
- ***Product:*** Comprehensive Transportation Plan



What is Long Range Transportation Planning?

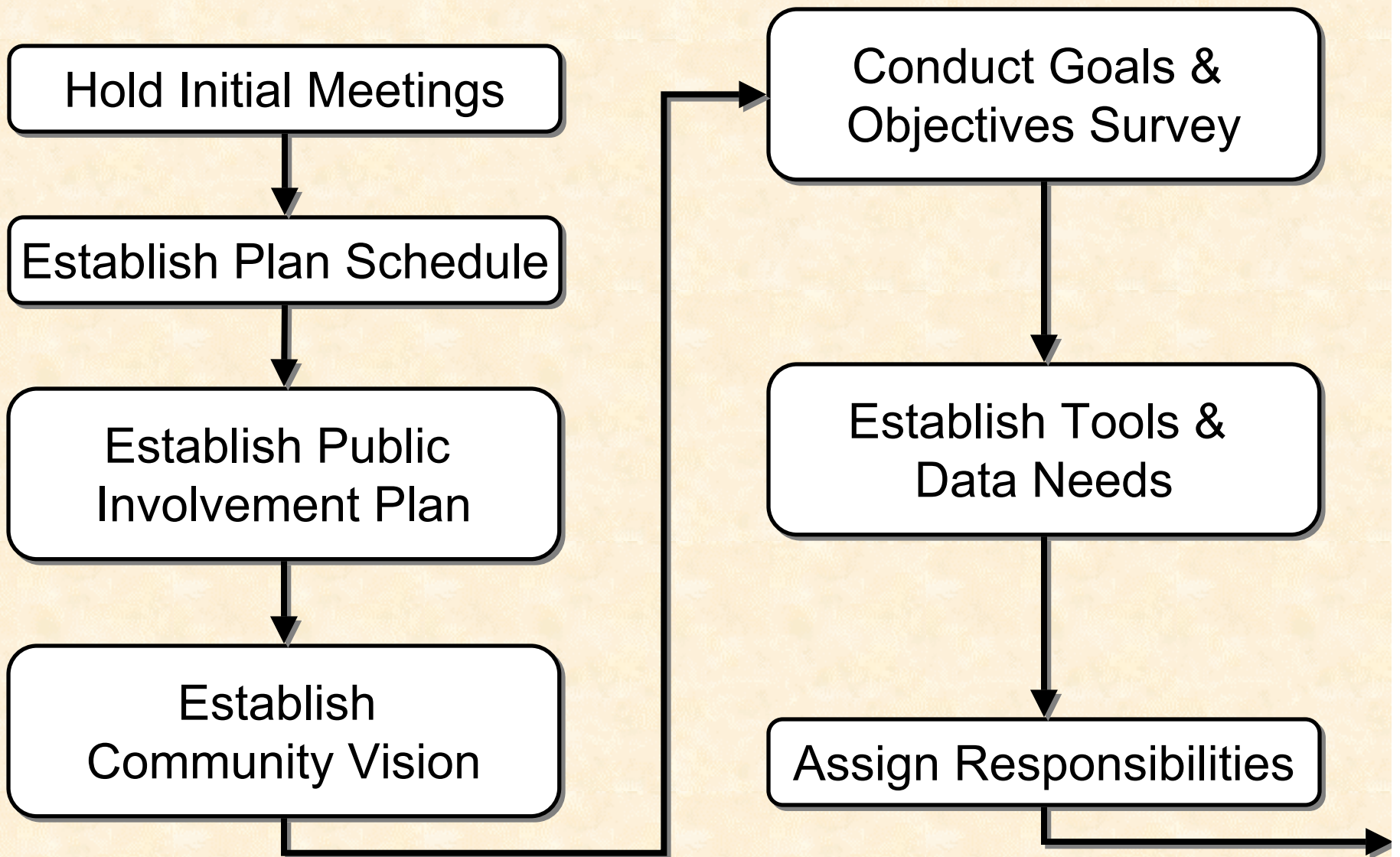
- ***Process:***
 - **Where are we now?**
 - Identify existing and future roadway deficiencies
 - Identify multi-modal elements
 - **Where do we want to go?**
 - Reduce traffic congestion
 - Improve safety
 - What are the local community's goals?
 - **How will we get there?**
 - Develop feasible solutions to address problems and meet goals



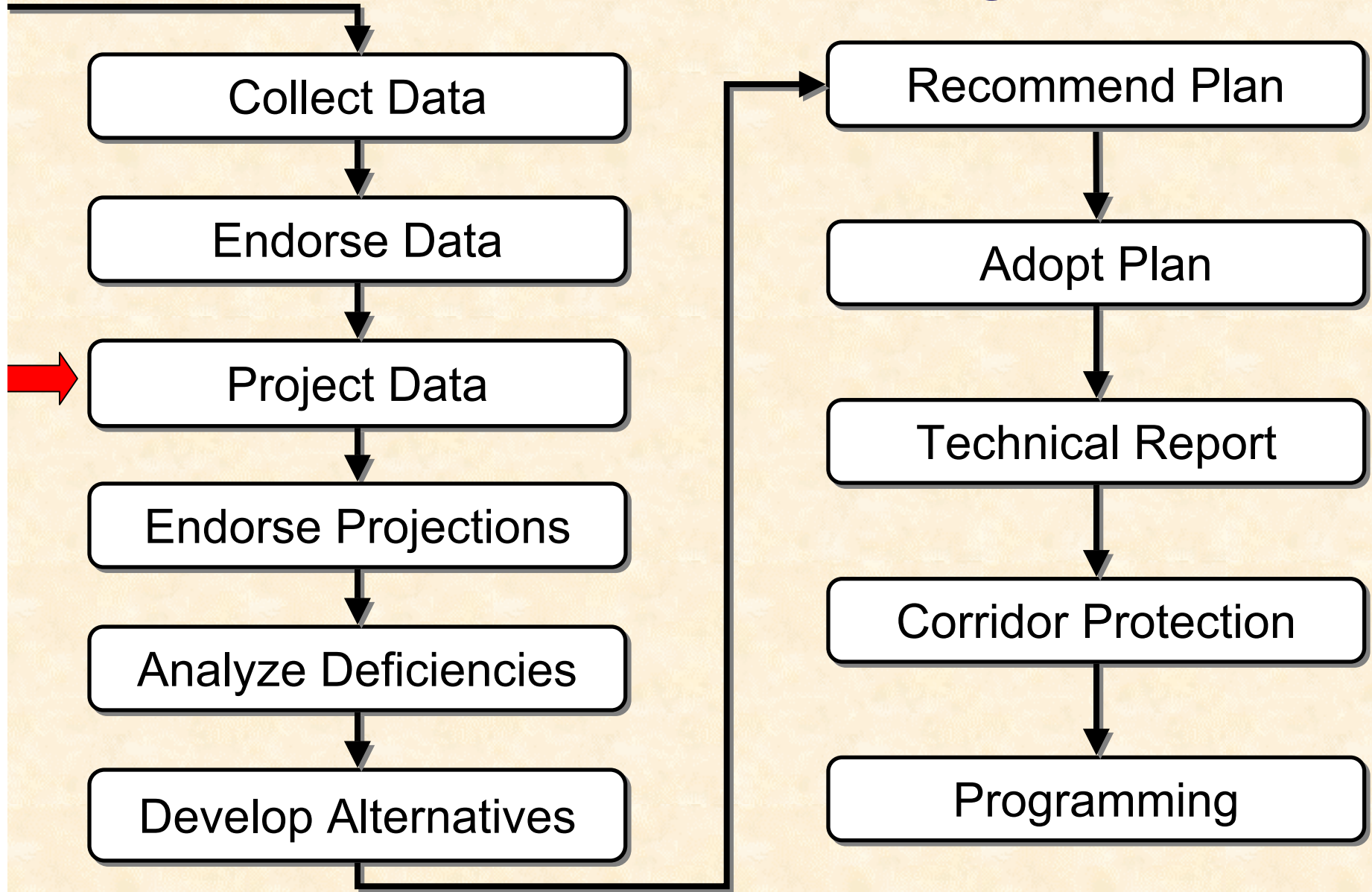
What is Long Range Transportation Planning?

- ***Benefits:***
 - Integration with land use planning and the development process
 - Minimum disruption for citizens
 - Cost savings

Transportation Planning Process



Transportation Planning Process

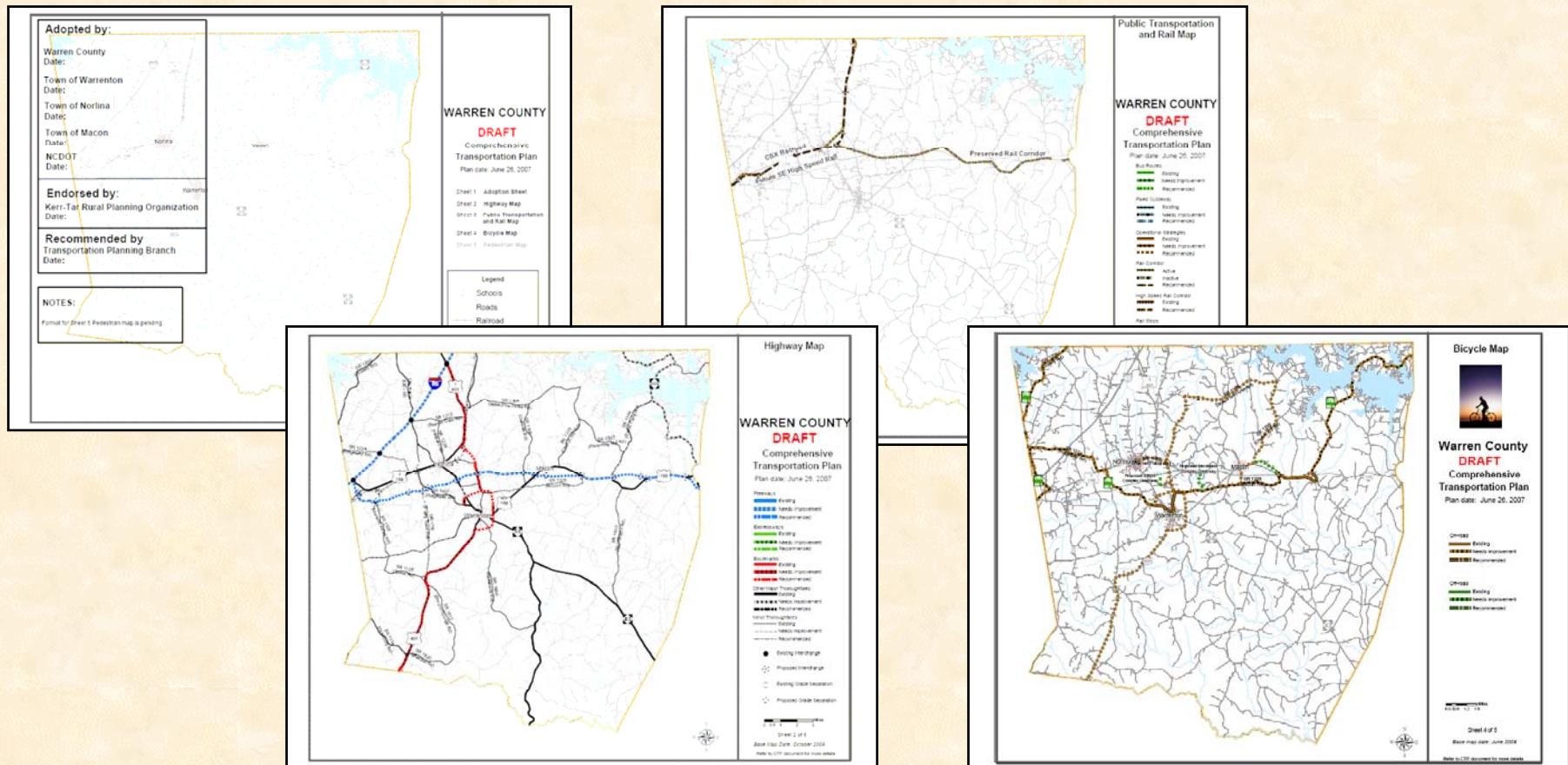


A Brief Refresher...

What does the CTP look like?

The CTP contains 3 multi-modal maps and a cover sheet.

Note: This CTP also contains a Sanford Inset of the Highway Map



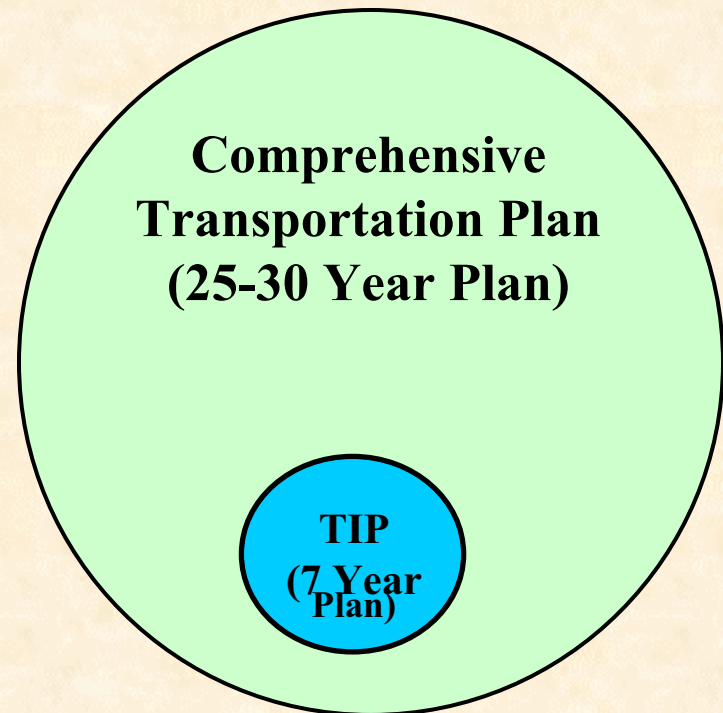
Where does a CTP Fit in the Big Picture?

Projects would be selected from a CTP for inclusion in the Transportation Improvement Program (TIP)



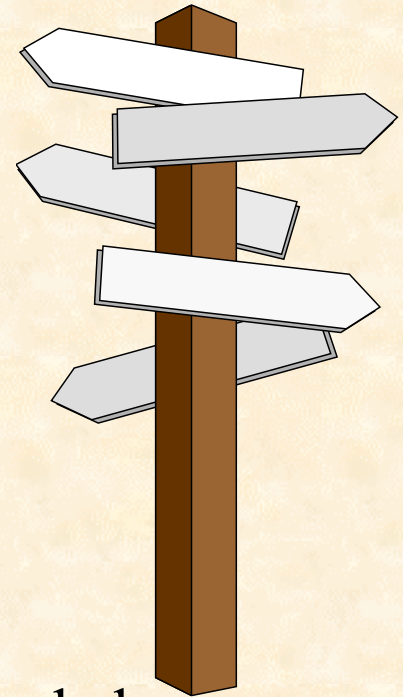
TIP is a 7-year planning document and funding schedule.

The CTP has a 25-30 year time span and is not fiscally constrained

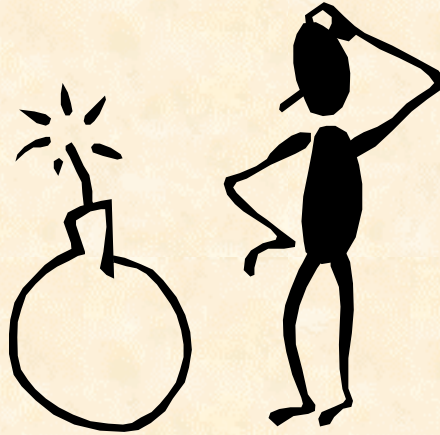


Comprehensive Transportation Plan

- **Multimodal**
 - Highway
 - Public Transportation and Rail
 - Bicycle
 - Pedestrian (future)
- **Recommendations**
 - Existing, Needs Improvement, Recommended
- **Highway Categories**
 - Freeways, Expressways, Boulevards, Other Major Thoroughfares and Minor Thoroughfares



What can be done?



Develop a Comprehensive Transportation Plan that addresses the current and future needs of the Topsail Island Area

Contacts

Tyler Bray, Triangle Planning Group

733-4705 ext. 58

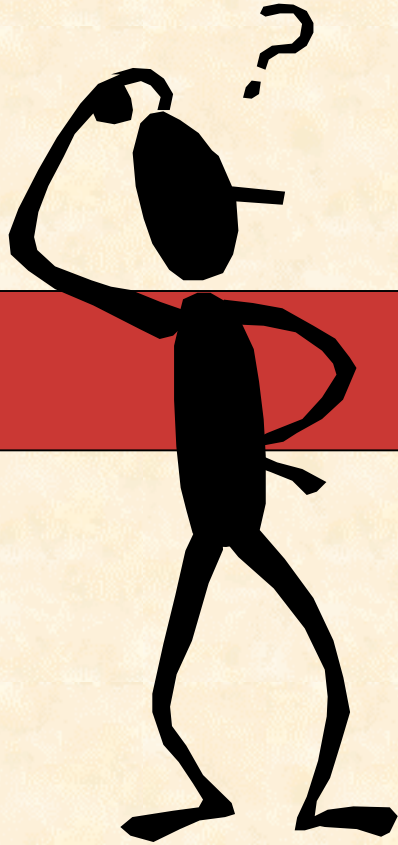
tbray@dot.state.nc.us

James Upchurch, Southeast Planning Group Supervisor

733-4705 ext. 31

jupchurch@dot.state.nc.us

<http://www.ncdot.org/doh/preconstruct/tpb/>



Questions??

Freeway Facility



US 74 Near Waynesville



US 264 East of I-95

- High mobility, low access
- 55 mph or greater
- Cross-section: Minimum 4 lanes with a median
- Connections provided only at interchanges; all cross streets are grade-separated
- Driveways not allowed
- Traffic signals not allowed
- *Examples: I-40, I-95, US 64 between Rocky Mount & Williamston, US 1 between Raleigh and Sanford*

Expressway Facility



US 221 (Marion Bypass)



US 220 in Rockingham County

- High mobility, low access
- 45 to 60 mph
- Cross-section: Minimum 4 lanes with a median
- Connections: Interchanges (major cross streets) and at-grade intersections (minor cross streets)
- Driveways are limited in location and number; right-in/right-out only
- Traffic signals not allowed
- *Examples: US 117 north of I-40, US 74 in Columbus County*

Boulevard Facility



US 70 East of Goldsboro



Cary Parkway

- Moderate mobility, moderate access
- 30 to 55 mph
- Cross-section: Minimum 2 lanes with a median
- Connections: At-grade intersections for most major and minor cross streets
- Driveways allowed - primarily right-in/right-out; encourage consolidation and/or sharing of access
- *Examples: US 1 in Raleigh, NC 55 (Holly Springs Bypass), US 70 between Clayton and Garner*

Major/Minor Thoroughfares



US 441 South of Dillsboro



US 13 North of Ahoskie

- Balanced mobility and access
- 25 to 55 mph
- Cross-section: Minimum 2 lanes, no median; includes facilities with a continuous left turn lane
- Connections: At-grade intersections
- Driveways allowed with full movements; consolidate or share connections if possible
- *Examples: NC 86 north of Hillsborough, US 64 in Siler City, US 70 through Kinston, NC 168 in Currituck County*

Network Roads






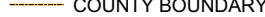

FIGURE #

NETWORK ROADS



0 0.5 1 2 3 Miles

LEGEND

-  RAILROADS
-  Network Roads
-  Roads
-  COUNTY BOUNDARY
-  PLANNING AREA

AREA OF TOPSAIL ISLAND

PENDER AND ONSLOW COUNTIES
NORTH CAROLINA

PREPARED BY THE
NORTH CAROLINA DEPARTMENT OF TRANSPORTATION
TRANSPORTATION PLANNING BRANCH
IN COOPERATION WITH THE

U.S. DEPARTMENT OF TRANSPORTATION
FEDERAL HIGHWAY ADMINISTRATION

BASE MAP DATE: DECEMBER 1, 2005

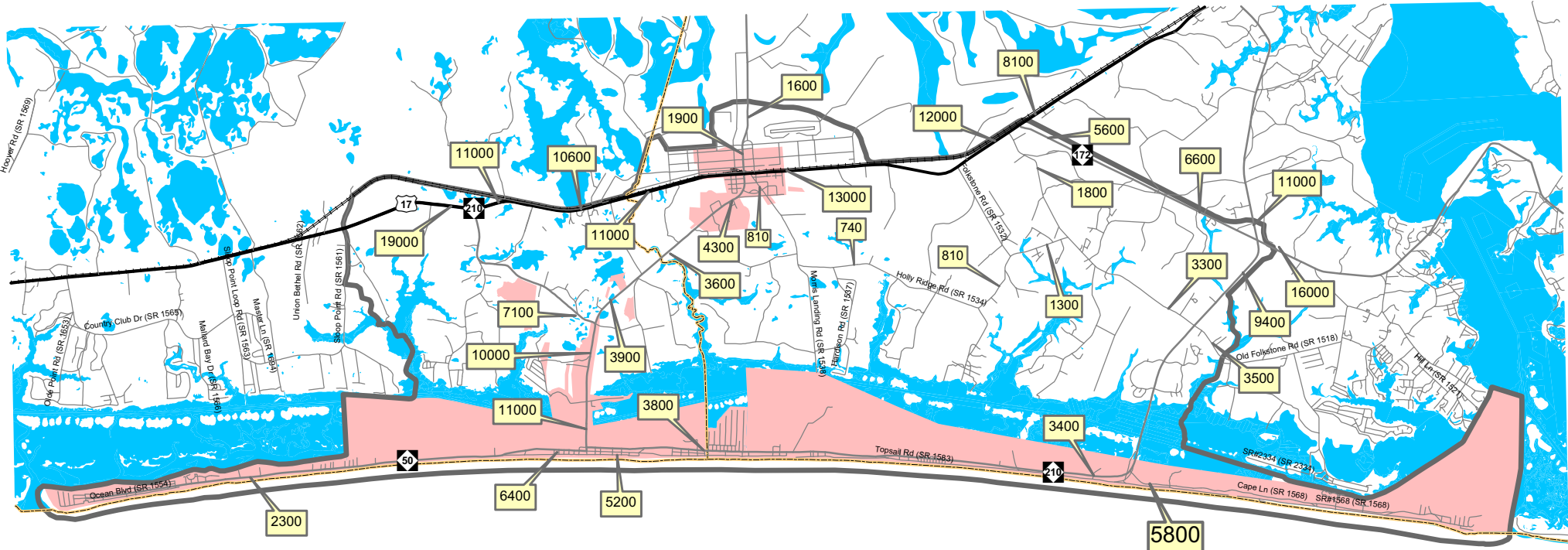
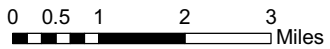


FIGURE #

2005 PROJECTED AADT



LEGEND

- ##### 2005 PROJECTED AADT
- COUNTY BOUNDARY
- RAILROADS
- MUNICIPAL BOUNDARIES
- WATER
- PLANNING AREA
- US Routes
- NC Routes
- SR Routes
- LOCAL Routes

**AREA OF
TOPSAIL ISLAND**

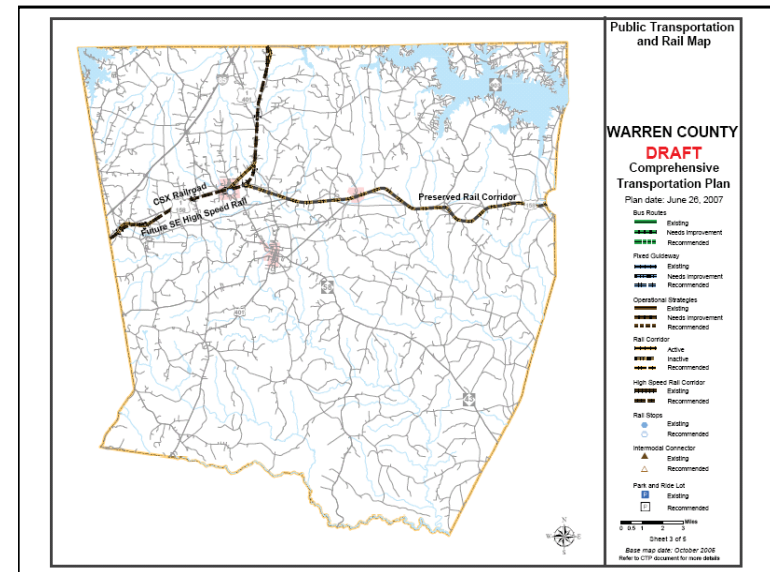
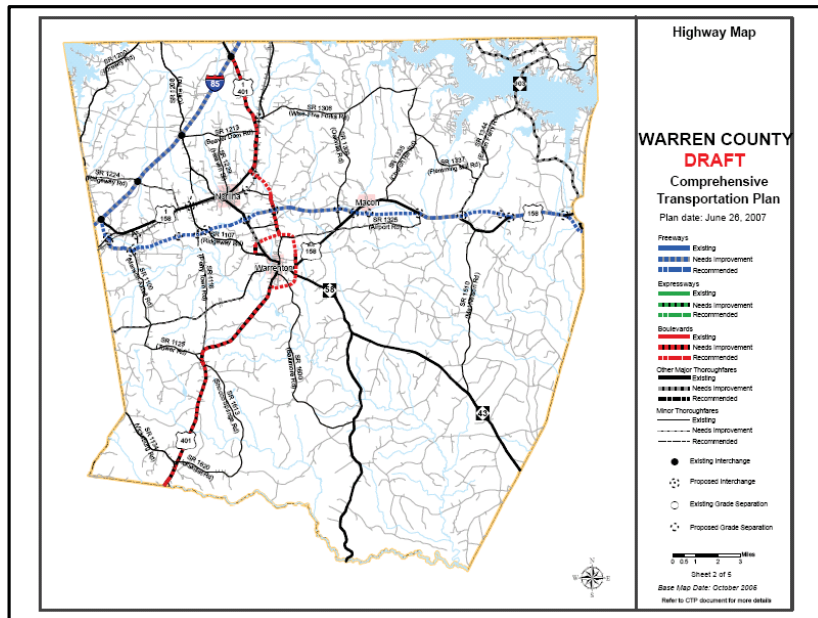
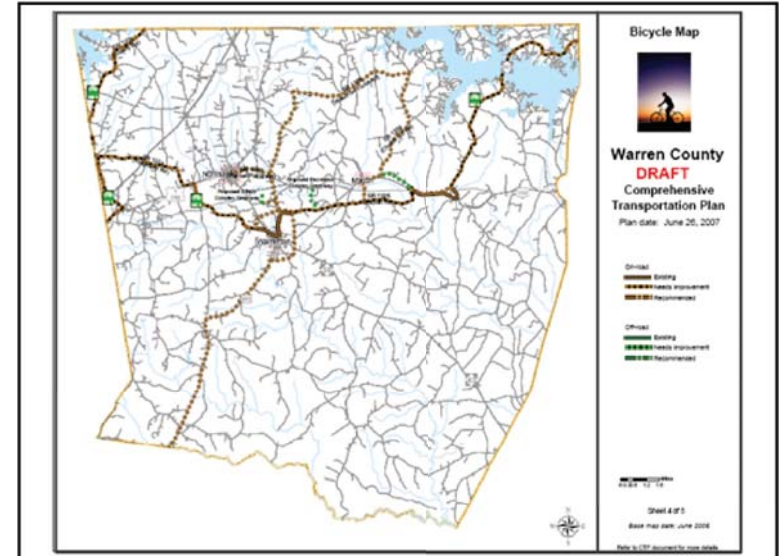
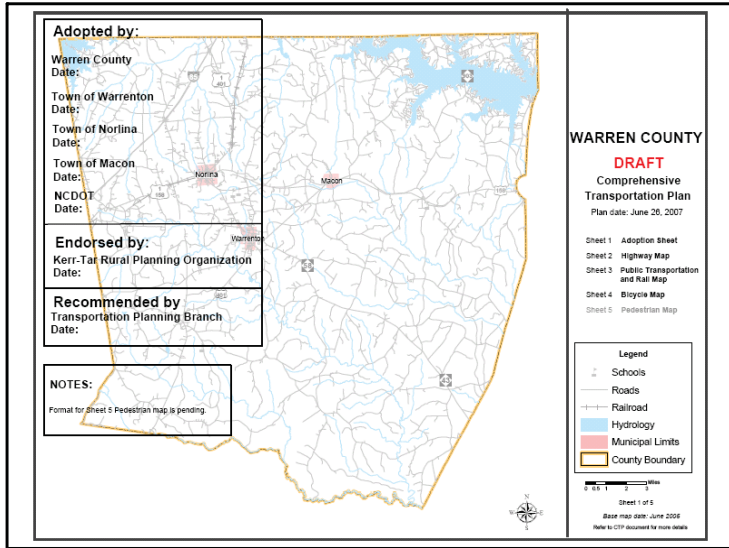
PENDER AND ONSLOW COUNTIES
NORTH CAROLINA

PREPARED BY THE
NORTH CAROLINA DEPARTMENT OF TRANSPORTATION
TRANSPORTATION PLANNING BRANCH

IN COOPERATION WITH THE
U.S. DEPARTMENT OF TRANSPORTATION
FEDERAL HIGHWAY ADMINISTRATION

BASE MAP DATE: DECEMBER 1, 2005

CTP Map Examples



Vision Plan Division 3

Adopted by The North Carolina Board of Transportation




Plan Date: September 2, 2004






LEGEND

Strategic Highway Corridors



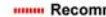
Freeways

-  Existing
-  Needs Upgrade
-  Recommended

Expressways

-  Existing
-  Needs Upgrade
-  Recommended

Boulevards

-  Existing
-  Needs Upgrade
-  Recommended

Thoroughfares

-  Existing
-  Needs Upgrade
-  Recommended

-  US/Other Major Route
-  Division Primary Routes
-  Division Secondary Routes
-  State Port
-  Major Airport
-  Intermodal Connector
-  Coast Guard Station
-  Major Military Base
-  Urban Area
-  County Boundaries
-  Water Features

